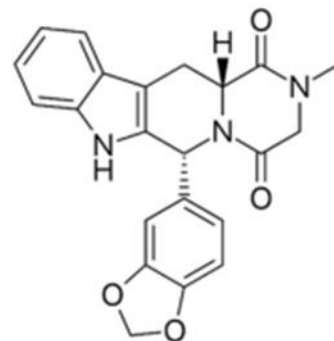


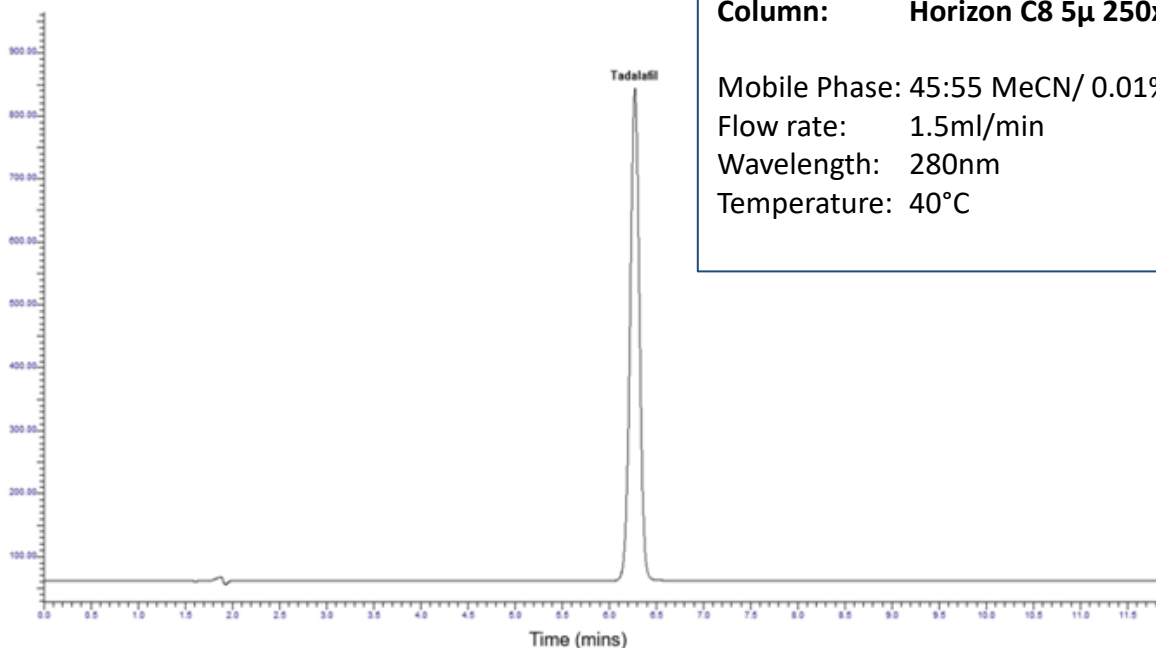
Application Note: Tadalafil

Tadalafil is a drug used in the treatment of pulmonary hypertension (high blood pressure in blood vessels that supply the lungs) and is also used to treat erectile dysfunction (ED) and symptoms of an enlarged prostate.

It is on the World Health Organization's (WHO) list of essential medicines, which serves as a model of the safest and most effective medications needed by a health system. Tadalafil was approved for medical use in the United States in 2003. It is available as a generic medication. In 2020, it was the 261st most commonly prescribed medication in the United States, with more than 1 million prescriptions



This application brief describes the use of a Horizon C8 column to analyze tadalafil in accordance with the official USP monograph.



Column: Horizon C8 5 μ 250x4.6mm

Mobile Phase: 45:55 MeCN/ 0.01% TFA in Water

Flow rate: 1.5ml/min

Wavelength: 280nm

Temperature: 40°C